

<b>Report to:</b>	Services Scrutiny Committee
<b>Date:</b>	26 January 2017
<b>Cabinet Member:</b>	Councillor Gareth Roberts and Councillor Mair Rowlands
<b>Project leader:</b>	Jenny Williams (Director of Social Services, Conwy County Borough Council)
<b>Contact Officer:</b>	Rhion Glyn (Senior Business Manager, Adults, Health and Wellbeing Department)
<b>Subject:</b>	North Wales Population Assessment Draft Report

## **1 Purpose of the report**

- 1.1 Present the North Wales Population Assessment produced as a requirement of the Social Services and Well-being (Wales) Act 2014.

## **2 The decision sought**

- 2.1 The Committee is asked to scrutinise the North Wales Population Needs Assessment Draft Report (details in part 3.4 of this report).

## **3 Reasons for recommendations**

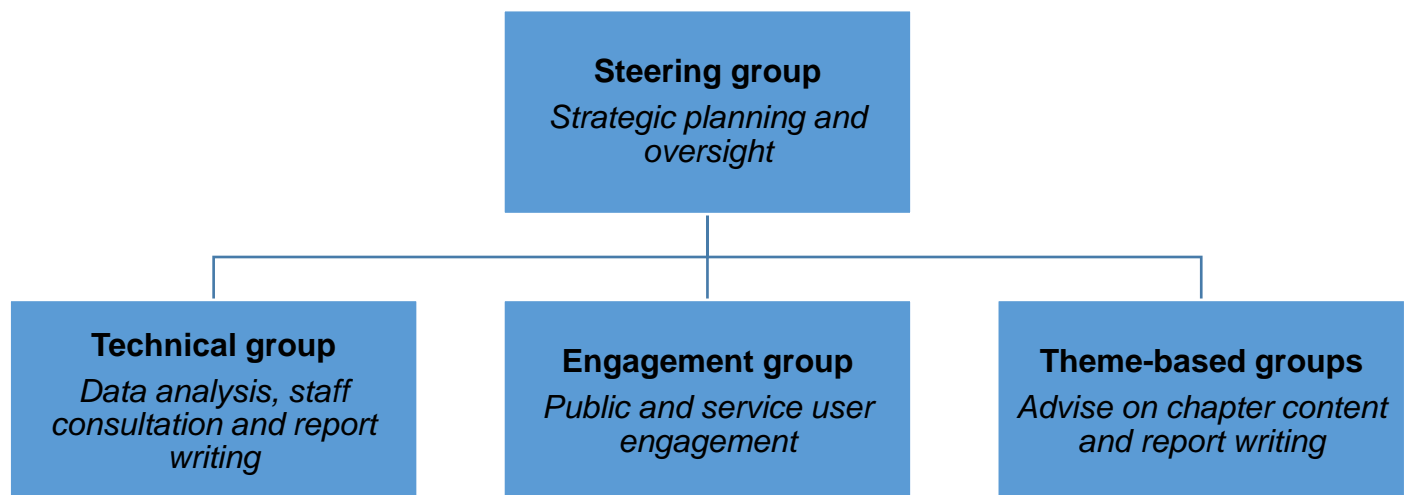
- 3.1 Section 14 of the Social Services and Wellbeing Act (2014) requires local authorities and health boards to jointly assess:
- a) The extent to which there are people in a local authority's area who need care and support
  - b) The extent to which there are carers in the local authority's area who need support
  - c) The extent to which there are people in a local authority's area whose needs for care and support are not being met
  - d) The range and level of services required to meet the care and support needs of people in the local authority's area
  - e) The range and level of services required to achieve the purposes in Section 15(2) (preventative services) in the local authority area
  - f) The actions required to provide the range and level of services identified in accordance with paragraphs (d) and (e) through the medium of Welsh
- 3.2 The report must cover the following themes: children and young people; older people; health / physical disabilities; learning disability/autism; mental health; sensory impairment; carers who need support; and, violence against women, domestic abuse and sexual violence. In north Wales the following themes have also been included: homelessness, veterans and people in the secure estate, along with a link to the Area Planning Board Substance Misuse Needs Assessment.

- 3.3 A single report must be produced for the north Wales region and be approved by the Board of the Local Health Board and by the full council in each Local Authority. It should be published on 1 April 2017 on each local authority and health board website in Welsh and English, with a copy sent to Welsh Ministers.
- 3.4 A summarised version of the assessment has been included as Appendix 1. A full copy of the Population Assessment Report can be obtained from the Adult, Health and Wellbeing Department.

#### 4 Background information

- 4.1 The North Wales Social Care and Wellbeing Services Improvement Collaborative set up a regional steering group to lead the work with technical, engagement and theme-based groups to lead on specific tasks. Although regional direction was given, most of the work in terms of collating information, analysing and engagement has been done locally within Gwynedd.

#### North Wales Population Assessment Project Management structure



- 4.2 The Population Assessment Report was engagement led. It was based on feedback from staff, partner organisations, service users and the general public to identify strategic needs for care and support. This included information from existing commissioning strategies and needs assessments. The project team collected evidence to challenge these hypotheses through data analysis, background literature reviews, service reviews and additional focussed engagement work.
- 4.3 The requirement to produce an accessible, regional report in a short timescale has limited what can be included. Having said this, the report will provide an evidence base for services and strategies and underpin the integration of services and support partnership arrangements.

- 4.4 The next phase of the project will involve using the Population Assessment to develop an area plan for the region and we are currently awaiting the guidance about this from Welsh Government.
- 4.5 Over the coming months we will also be developing the assessment specifically for Gwynedd, thus ensuring that we have the appropriate evidence base to produce local and suitable commissioning plans in the future.
- 4.6 Engagement for the Population Assessment included: a questionnaire for organisations that asks for their views and evidence; a facilitator’s guide for partners to use to run discussion groups with service users; a questionnaire for the public available on the Citizen’s Panel website along with interviews with Citizen’s Panel members; workshops with staff and councillors organised by each local authority. It is anticipated that further engagement will be undertaken as part of the next step of the project.
- 4.7 A Well-being Assessment must be produced as a requirement of the Well-being of Future Generations (Wales) Act 2015 by each Public Service Board in a similar timescale to the Population Assessment. The Population Assessment considered the care and support needs of the population while the Well-being Assessment covers prosperity, health, resilience, equality, vibrant culture, global responsibility and cohesive communities. There is overlap between the two so the project team have worked jointly and communicated frequently with the Public Services Boards in north Wales. An example is joint engagement work carried out for both assessments.
- 4.8 A full Equalities Impact Assessment is being carried out as part of the project

## 5 Resource implications

- 5.1 The North Wales Social Care and Wellbeing Services Improvement Collaborative funds a Regional Project Manager to support the project and associated costs including translation and specialist engagement. There have been costs to the local authorities, BCUHB and Public Health Wales in staff time to support the project e.g. staff to carry out engagement work with the public, service users, staff and elected members.

Background papers	Website info.
Social Services and Well-being (Wales) Act 2014: Code of Practice	<a href="http://www.ccwales.org.uk/codes-of-practice-and-statutory-guidance/">http://www.ccwales.org.uk/codes-of-practice-and-statutory-guidance/</a>